

BANKSIA WOODLAND

Banksia Woodland is a unique plant community found on the sandy soils of the coastal plain around Perth. A special community of plants and animals live in the Woodland. The plants and animals in Banksia Woodland depend upon each other for their survival. Banksia Woodland is susceptible to Dieback.



Firewood Banksia cone before the seeds are released.



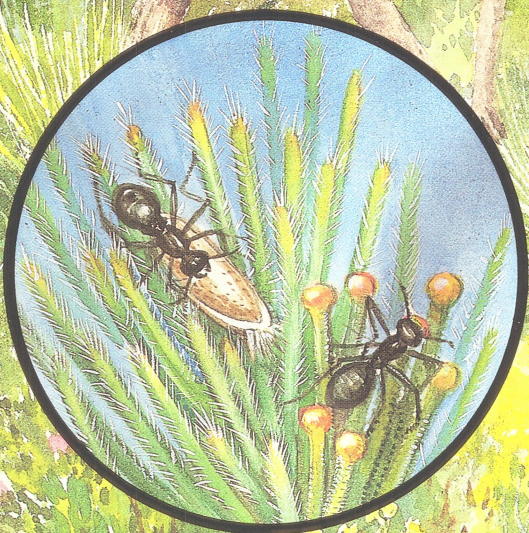
New Holland Honeyeater collecting nectar from the flowers of the Firewood Banksia.



Black Cockatoo searching for seeds on a Firewood Banksia.



Western Three Spotted Skipper Butterfly sipping nectar from the flowers of a Pineapple Bush.



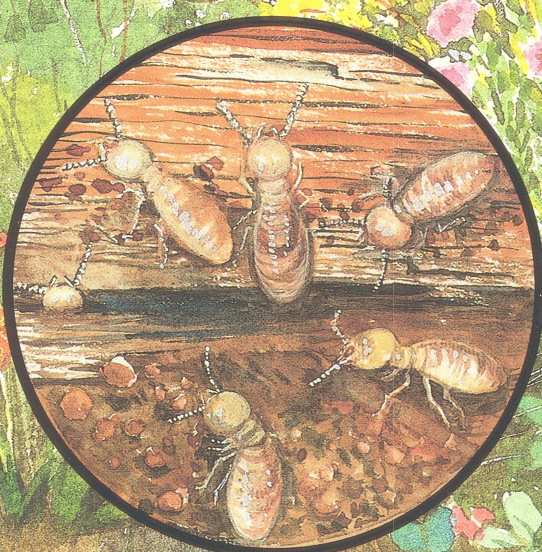
Ants collecting Woolly Bush fruit to store in their nests for food.



Western Spiny-tailed Gecko basking in the sun, camouflaged against the bark.



Bobtail warning off an intruder as it searches for a meal of Swan Berry fruit.



Termites feeding on dead wood and leaf litter.



Echidna searching for termites.



Honey Possum looking for nectar in Couch Honeypot flowers.

